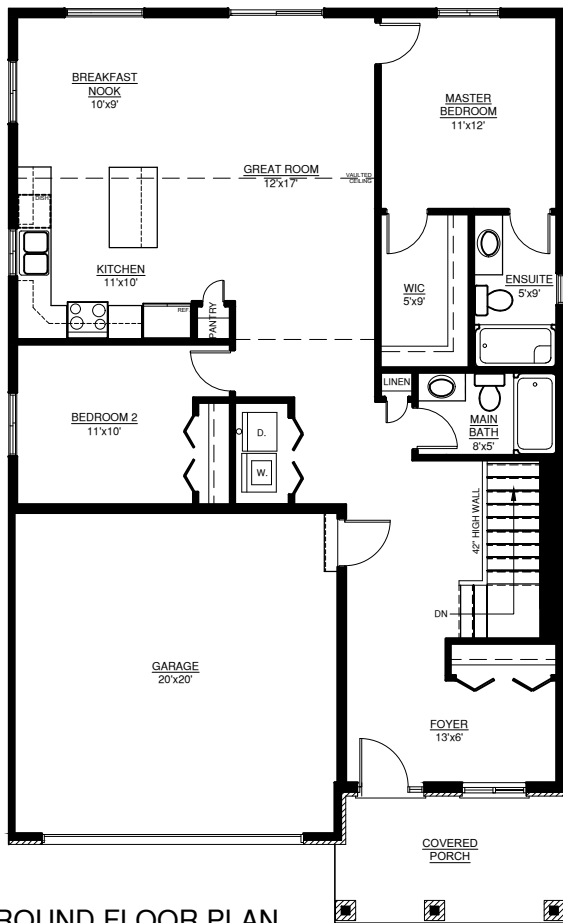
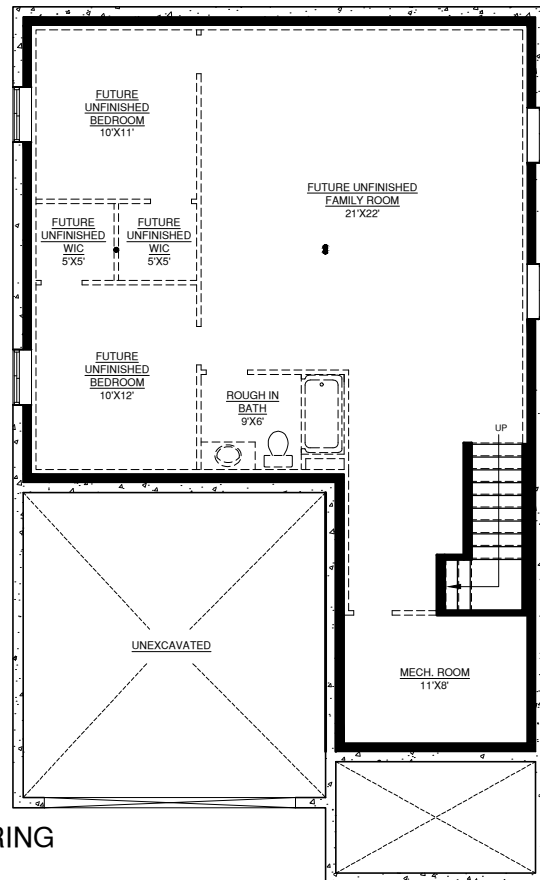


BORDEAUX II

1,341 FT²



GROUND FLOOR PLAN
34'-8"X57'-0"



BASEMENT FLOOR PLAN

FEATURING

- 2 BEDROOMS
- 2 BATHROOMS
- VAULTED CEILING IN MAIN AREA
- MAIN FLOOR LAUNDRY
- COVERED FRONT PORCH
- DOUBLE CAR GARAGE
- STONE SKIRT WITH SIDING ABOVE

OPTIONAL UPGRADE TO FULL STONE FRONT AS SHOWN AVAILABLE